

FEATURES



- 10.5" IPS LCD Screen (1920 x 1280 Resolution)
- Sunlight Readable LCD Display (600 nits)
- Intel® Alder Lake Processor N200
- Windows 11 Pro/IoT OS
- IP66 Water & Dust Protection
- 5ft Drop / Shock Protection (MIL-STD-810H)
- Intel® Wi-Fi 6E AX210, Bluetooth 5.2, Optional 4G LTE
- Optional: Barcode Reader, SIM Slot
- ODM Options: RFID or High Precision GPS Module Via Pogo-Pin Expansion Slot

Experience unmatched productivity with the MW-100 Slim Rugged Tablet PC, built to excel in the most demanding environments. Featuring IP66 waterproof protection, MIL-STD-810H drop and shock resistance, and a sunlight-readable LCD, it performs effortlessly in field service, construction, public safety, emergency response, manufacturing, industrial settings, healthcare, logistics, and more. With our comprehensive ODM and OEM services, the MW-100 can be tailored to your needs, offering options like a 2D barcode scanner, 4G LTE, RFID or high precision GPS Module and additional features. Choose the MW-100 for exceptional durability and flexibility.

SPECIFICATIONS

RUGGEDNESS

IP Rating	IP66
Drop Rating	MIL-STD-810H, Method 516.8, Procedure IV
Shock Rating	MIL-STD-810H, Method 516.8, Procedure I
Vibration Rating	MIL-STD-810H, Method 514.8, Procedure I

SYSTEM

Processor	Intel® Processor N200, Max Turbo Frequency 3.7GHz, 6 MB Intel® Smart Cache
GPU	Intel® UHD Graphics, Max Dynamic Frequency 750MHz
Memory	8GB LPDDR5
Storage	128GB
OS	Windows 11 64-bit Pro/IoT
Security	TPM 2.0

DISPLAY

Screen Size	10.5" IPS LCD
Resolution	1920 x 1280
Brightness	600 nits, Backlight
Contrast Ratio	1500 : 1
Touch Screen	Capacitive 10-Point Multi-Touch
Top Glass	Chemically Hardened Glass for Front Impact Resistance

COMMUNICATIONS

Wi-Fi	Intel® Wi-Fi 6E AX210
Bluetooth	Bluetooth 5.2
4G LTE (Optional)	4G LTE Module with M.2 Interface

POWER

AC Adapter	110-220V AC input, 12V/3A DC output, Magnetic Connector
Battery	2S1P 7.6V 4100mAh (31Wh)

I/O INTERFACE

Sensors	G-sensor, Light Sensor
Audio	2 x Speakers 1 x Built-in Mic
Camera	Front Camera: 5MP Rear Camera: 13MP with Auto Focus
Ports	2 x USB C Ports (Charging / USB 3.1 / Display) 1 x 14 Pin Docking Connector (Support USB 2.0 & Charging) Magnetic Charger Jack Optional: 1 x 10 Pin PoGo Pin Connector on Rear Chassis (Support USB 2.0) Optional: 1 x SIM Slot
Buttons	Power On/Off Button (Hold 10s will Reset the System) Volume +/- Button 1 x Programmable Button
Barcode Scanner	Optional: Built-in 2D Barcode Scanner

MECHANICAL

LED	1 x Charging Indicator, 1 x Power Indicator
Dimensions	246.6 x 185.6 x 11.6mm
Weight	800g
VESA Mount	75 x 75mm, Screw Specifications: M3 Type

ENVIRONMENTAL

Temperature:	
- Operation	-10°C to 50°C
- Storage	-20°C to 60°C
Humidity	10% to 90% Non-condensing

REGULATORY

Certification	FCC, CE, IATA Medical Certification
----------------------	--

DIMENSIONS AND SYSTEM LAYOUT



ACCESSORIES



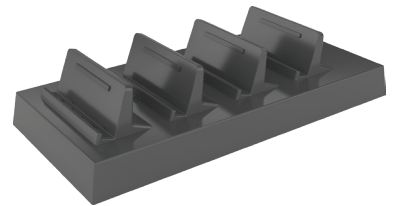
AC Adaptor with Magnetic Connector



Hand Strap



Docking Station



4-Port Charging Station

OPTIONAL APPLICATION MODULE



Built-in Barcode Reader



RFID or High Precision GPS Module Via Pogo-pin Expansion Slot at Rear Chassis. (ODM Option only)